

## B-BBEE Verification Services

---

A high-angle photograph of two business professionals shaking hands. The person on the left is a man with short dark hair and glasses, wearing a light blue suit jacket. The person on the right is a woman with dark hair in a bun and glasses, wearing a white long-sleeved shirt and a brown skirt. They are standing on a grey tiled floor. The bottom right corner of the image is a dark red triangle.

**Taking your  
business to the  
next level**

## Contents

Clear advice from ethical, independent and quality-driven experts, throughout South Africa and around the world	04
BDO in South Africa	04
<b>Our B-BBEE services</b>	06
Verification.....	06
Training.....	06
Scorecard compilation.....	06
Scenario planning.....	06
Consulting and strategy planning.....	06
Supplier analysis.....	06
Seven reasons to comply with B-BBEE.....	07
A company's compliance and status categories.....	07
Categories .....	08
Summary of scorecard weightings.....	08
Verification process.....	08
BEE recognition and levels.....	09
The role of a verification agency in issuing a certificate.....	09



## Clear advice from ethical, independent and quality-driven experts, throughout South Africa and around the world

1 900+ people providing clarity in audit, tax, advisory, and business outsourcing to companies across numerous industries. Seven offices in South Africa and 97 292 people in 167 countries around the globe.

We offer industry-specific practices, world-class resources, and an unparalleled commitment to meeting our clients' needs with 75% of our clients recommending us. We serve more than 49 JSE-listed domestic clients and over 158 international clients, who are clear on why they chose BDO:

- ▶ Quality, independence and a high ethical standard across all services
- ▶ Unparalleled partner-involvement (10:1 staff to partner ratio, globally)
- ▶ Deep industry knowledge and participation
- ▶ Geographic coverage across South Africa and Africa
- ▶ Cohesive global network
- ▶ Level 1 BEE Contributor
- ▶ Focused capabilities across over 20 disciplines

Being ethical and quality driven is a given for us, and to show exactly how this is a part of our DNA, we have developed the [BDO Clarity Charter](#). This is our commitment as individuals and as a firm. It underpins all we say and do, from how we live our values to how we engage with you, our clients and all our stakeholders.

Our BRAND PROMISE – exceptional client service, always and everywhere - is founded on three core delivery pillars: being responsive, providing the right resources, strong relationships.

### What Is Our Ambition?

Driven by our own ambition, our clients' needs and a focus on delivering exceptional client service, we're working collaboratively across the world to offer innovative solutions and services to our clients.

We're striving to become a much larger BDO, and to be seen as the only viable choice for our clients whose companies are looking to grow.

We aim to be the one true powerhouse of the mid-tier – a major player on the global stage of our profession.



## BDO In South Africa

BDO South Africa's seven offices and over 1 900+ professionals are at your service – no matter where you do business. You will find us in Cape Town, Durban, Johannesburg, Port Elizabeth, Pretoria, Roodepoort and Stellenbosch.

## Our People

At BDO, we understand that exceptional service to our clients begins – and ends – with exceptional regard for our people.

- ▶ Partners and Staff are accessible
- ▶ We encourage collaboration in an atmosphere of trust and cooperation, mentoring, consulting, and exchanging ideas
- ▶ The BDO culture emphasises career growth
- ▶ Locations in large and small centres around the globe



\$ 11.8B

**FEE INCOME**  
Global revenues  
increased by 10.8%



97 292

**PARTNERS AND  
STAFF**



1 728

**OFFICES**



10 : 1

**PROFFESIONAL  
STAFF TO  
PARTNER RATIO**



167

**COUNTRIES &  
TERRITORIES**



114

**MEMBER FIRMS**

"BDO is one of the leading global accounting and consulting organisations uniquely built to provide the absolute highest standards of service with a collaborative culture that values all of its relationships."

## Our B-BBEE Services

### Verification

We conduct a thorough audit of an entity's B-BBEE scorecard to verify their contributions and/or performance in each of the five elements. This is much the same concept as an auditor auditing your financial statements, however with a different set of measurement criteria and rules. A certificate is the final product of this process.

### Training

Our technical experts around the country provide regular public training courses on which you can book a seat. Where there are a number of delegates requiring training, we can tailor in-house training programmes to suit your needs as a more affordable and targeted solution.

### Scorecard compilation

We are able to compile a preliminary B-BBEE scorecard in preparation for verification or as part of one of our other services.

### Scenario planning

Using your current scorecard as a benchmark or a year-to-date analysis, we can plot gaps in terms of where you are and where you would like to be and suggest various scenarios for you to achieve this.

### Consulting and strategy planning

Our senior technical team can assist in defining specific strategies and helping you to implement these in your business in order to increase your scoring, keeping in mind return on investment.

Consulting must occur separately to verification, and we may not verify your scorecard for two years after we complete our consulting obligations to you, as we must remain impartial.

### Supplier analysis

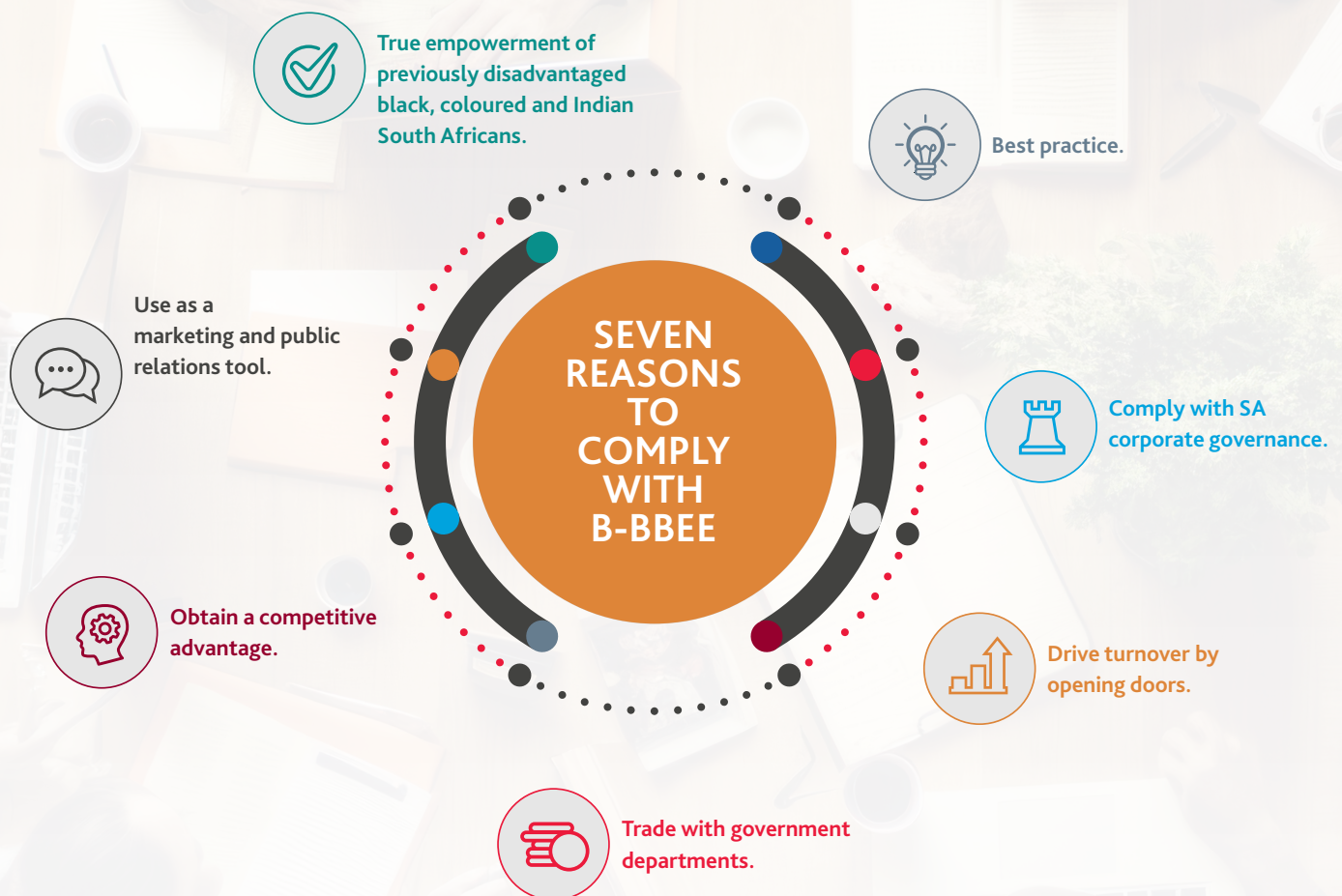
Assessing your suppliers to establish the overall B-BBEE procurement recognition benefit you can achieve from the procurement element can maximise your score. The process includes contacting suppliers, collection of certificates and calculation of procurement flow through recognition.



Assist clients in assessing and protecting Information Technology (IT) and Operational Technology (OT) assets from cyber risks, managing cybersecurity risk, responding to cyber incidence, remediating, and building cyber resilience.

The answers to these questions are viewed as a proportion of 'black' investment to 'non-black' investment and result in a compliance level. The sum of all these elements of compliance forms a broad-based scorecard.

## Seven reasons to comply with B-BBEE



A company's compliance and status is measured in terms of the following five elements:

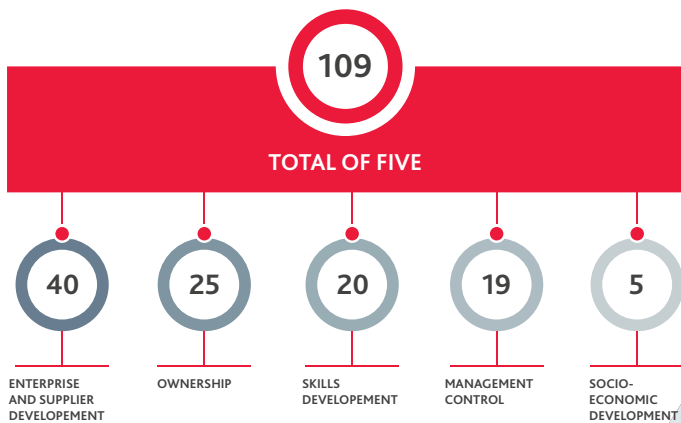
- Ownership**  
What percentage share do black people hold in the business?
- Management Control**  
What percentage of your management structure is occupied by black people?
- Skills Development**
- Enterprise and supplier development**
  - How do your suppliers' BEE ratings impact on yours?
  - How are you developing your black-owned supply chain through value-adding initiatives?
  - How are you developing other black-owned enterprises through value-adding initiatives?
- Socio-economic Development**  
How are you aiding access to the economy for the black community?

## Categories

Category	Annual Turnover Threshold (R)	Automatic Recognition – Black Ownership Level		
		100%	> 51%	< 51%
EME	< 10m	Level 1	Level 2	Level 4
QSE	< 50m	Level 1	Level 2	Not automatic, use scorecard points
Generic	> 50m	Not automatic, use scorecard points	Level 2	Not automatic, use scorecard points

## Summary Of Scorecard Weightings

B-BBEE Elements	Generic Weighting	QSE Weighting
Ownership	25	25
Management Control	19	15
Skills Development	20	25
Enterprise and Supplier Development	40	30
Socio-economic Development	5	5
<b>Total</b>	<b>109</b>	<b>100</b>



## Verification Process

Free needs analysis meeting/  
virtual meeting

1

n/a

Complete application and send  
to us

2

n/a

Receive your quotation

3

Within  
48 hours

Send us your acceptance by signing  
the quotation, receive invoice and  
pay

4

Up to  
30 days

Briefing meeting/virtual briefing  
meeting occurs

5

Within  
1 week

You collect your documentation  
and compile a BEE file and submit  
your file to us for analysis

6

Up to  
1 month

Analysis of your information,  
preparation of a preliminary  
scorecard, compilation of an audit  
plan and confirmation of an audit  
date by us

7

Up to  
2 weeks

Site audit occurs

8

3 days  
from  
issuing of  
audit plan

In office finalisation of  
information and review by a  
technical signatory, certificate  
issued

9

Up to  
2 weeks

Analysis of your information,  
preparation of a preliminary  
scorecard, compilation of an audit  
plan and confirmation of an audit  
date by us

10

Up to  
2 weeks





## BEE Recognition and Levels



## The role of a verification agency in issuing a certificate

Verification agencies play much the same role in the auditing of your BEE credentials as financial auditors do in the auditing of your financial information.

For example, submission of financials with a profit declaration will be audited to prove that this declaration is correct or incorrect.

B-BBEE verification agencies audit your B-BBEE performance and contributions, proving that the claim you have made regarding your contributions is correct or incorrect.

### Who can issue certificates?

Verification agencies must be accredited by the South African National Accreditation System (SANAS).

Our SANAS accreditation, allows us to issue a complete assurance certificate, based on the rigorous verification procedures undertaken.



"Our senior technical team can assist in defining specific strategies and helping you to implement these in your business in order to increase your scoring, keeping in mind return on investment."

For a clear perspective,  
Please contact us:

### JOHANNESBURG

Japie Britz  
Commercial Director and Gauteng Regional Manager  
jbritz@bdo.co.za

Dwayne Harriesunker  
Sales and Client Relationship Manager  
dharriesunker@bdo.co.za

52 Corlett Drive,  
Wanderers Office Park  
Illovo, 2196  
010 590 7200

### PORT ELIZABETH

Marike Muller  
Operations Director and Eastern Cape Regional Manager  
mmuller@bdo.co.za  
082 351 7117

Silicia Scheppel-Barnard  
Sales and Client Relationship Manager  
sscheppel-barnard@bdo.co.za  
076 773 1864

### DURBAN

Sharlin Jaiswar  
Kwazulu-Natal Regional Manager  
sjaiswar@bdo.co.za  
082 375 9155



/BDOSouthAfrica



/bdoafrica



/bdo\_sa



/bdosouthafrica



/company/bdo-south-africa

Copyright © 2022. BDO Verification Services (Pty) Ltd, a South African company, is an affiliated company of BDO South Africa Inc., a South African company, which in turn is a member of BDO International Limited, a UK company limited by guarantee, and forms part of the international BDO network of independent member firms. BDO is the brand name for the BDO network and for each of the BDO Member Firms.

This publication has been carefully prepared, but it has been written in general terms and should be seen as broad guidance only. The publication cannot be relied upon to cover specific situations and you should not act, or refrain from acting, upon the information contained therein without obtaining specific professional advice. Please contact BDO to discuss these matters in the context of your particular circumstances. BDO, its partners, employees and agents do not accept or assume any liability or duty of care for any loss arising from any action taken or not taken by anyone in reliance on the information in this publication or for any decision based on it.

The information contained in these documents is confidential, privileged and only for the information of the intended recipient and may not be used, published or redistributed without the prior written consent of BDO Verification Services (Pty) Ltd. The opinions expressed are in good faith and while every care has been taken in preparing these documents, BDO Verification Services (Pty) Ltd makes no representations and gives no warranties of whatever nature in respect of these documents, including but not limited to the accuracy or completeness of any information, facts and/or opinions contained therein. BDO Verification Services (Pty) Ltd, its subsidiaries, the directors, employees and agents cannot be held liable for the use of and reliance of the opinions, estimates, forecasts and findings in these documents.